

VCI[®]

Series: T400
3 & 4 - Way Trunnion
Mounted Ball Valve



Features

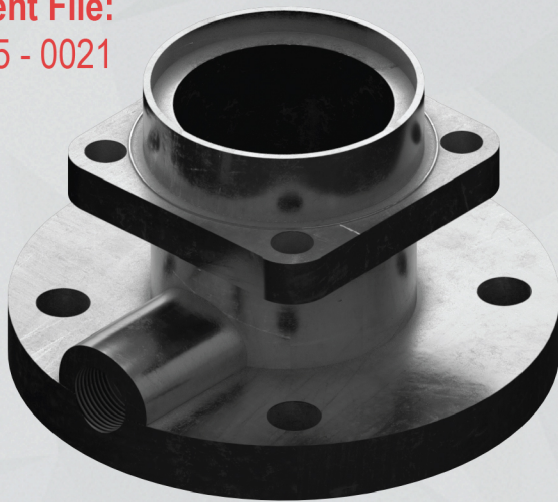
- One Piece Stem-Ball-Trunnion
- Live Loaded Resin / Metallic Seats
- Trunnion & Stem Bearings
- Triple Stem Seals
- Top Entry
- Valve Design Per ASME B16.34
- Fugitive Emission Certified to API 641

Benefits

- Direct Torque Transfer To The Ball
- Long Seat Service Life
- No Stem Side Loads
- Fire Safe Design
- Ease Of Maintenance
- Enhanced Stem Sealing Life

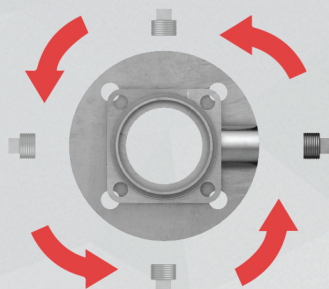
Patented Flanged Ends

Patent File:
1295 - 0021



Bleed Port Design

The VCI® T400 flanged ends design utilizes the built-in bleed ports that remove the client's need for bleed fittings & gaskets, and eliminates possible leak points where / when applicable.



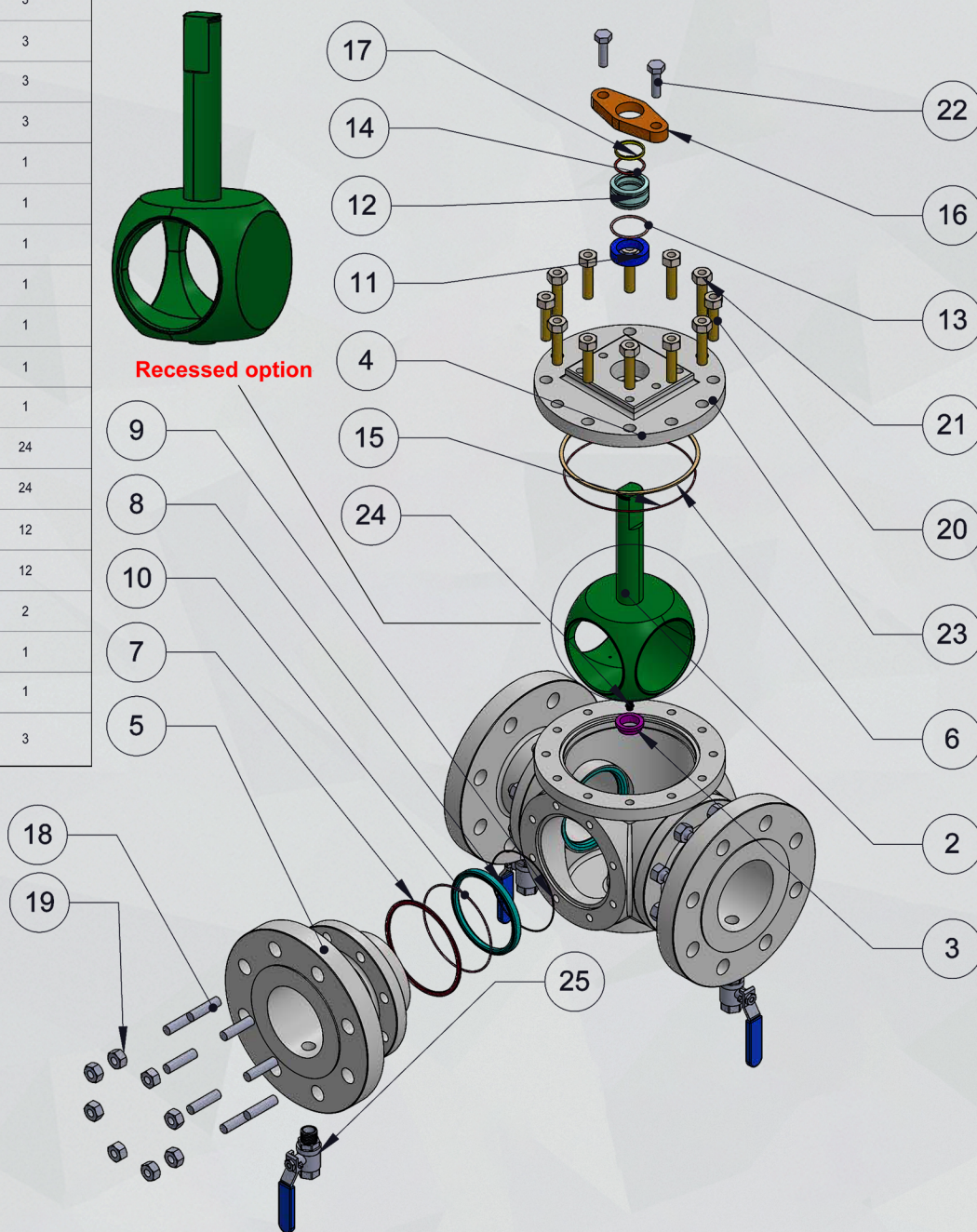
One Piece Stem-Ball-Trunnion Design

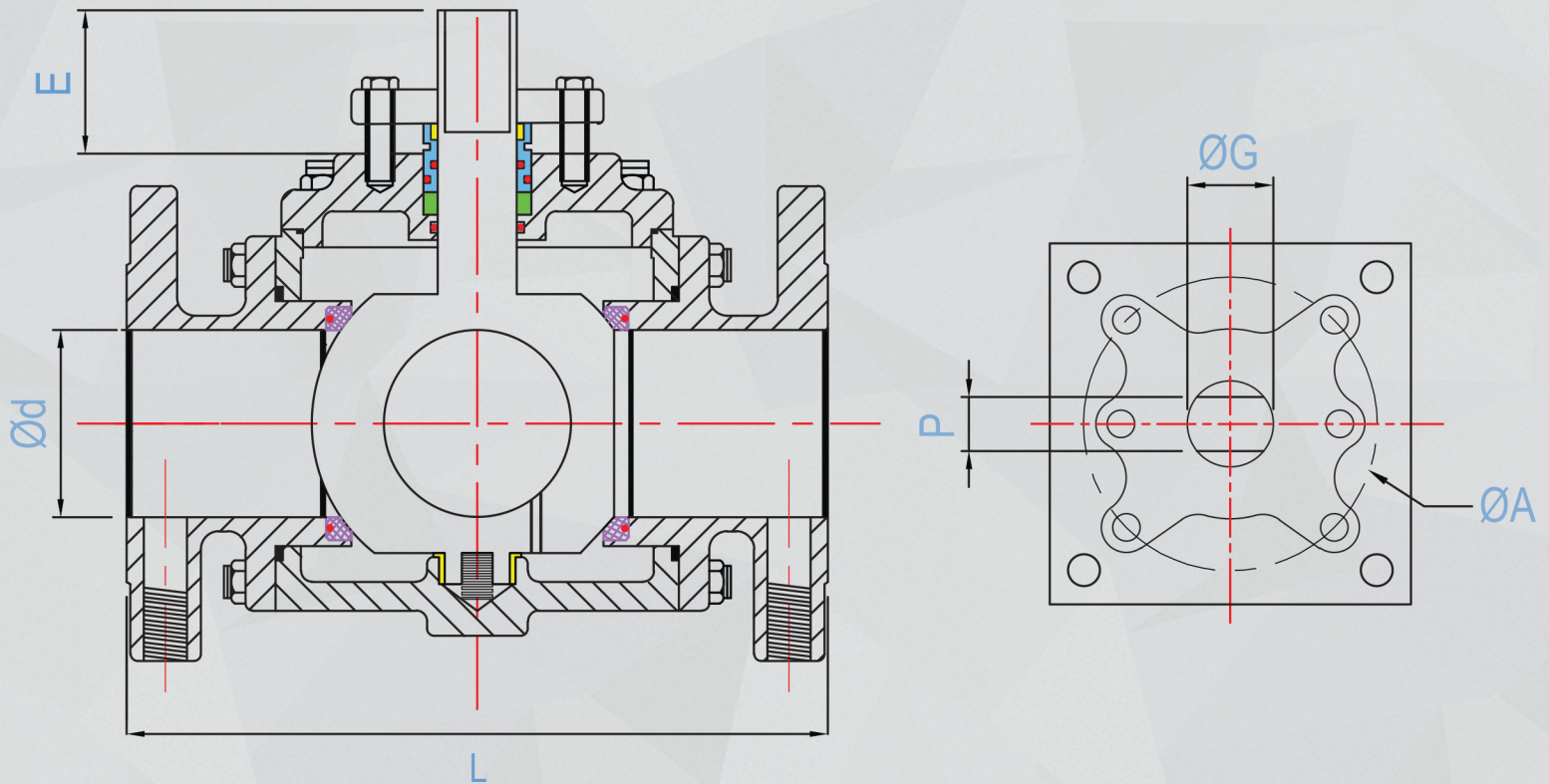
One piece stem-ball-trunnion design facilitates direct torque transfer by actuator.

End-to-body connection allows for versatile bleed-port configurations which can be assembled as per clients requirements.

VCI® Series T400 Exploded View

ITEM NO.	PART NUMBER	Material	explode view/QTY.
1	Body	ASTM A216 WCB	1
2	Ball-Stem-Trunnion	ASTM A351 CF8M	1
3	Trunnion bearing	PEEK	1
4	Primary Stem O-Ring Seal	FKM AED	1
5	END Flange	ASTM A216 WCB	3
6	Bonnet Gasket	SS 316 + GRAPHITE GASKET	1
7	Body Gasket	SS 316 +GRAPHITE GASKET	3
8	Seat	POLYCARBON(PTFE+GLASS +GRAPHITE)/ PEEK	3
9	Seat O-Ring	FKM AED	3
10	end Flange O-ring	FKM AED	3
11	Fire Safe stem Packing	GRAPHITE	1
12	Gland Ring	SS 316	1
13	Stem O-Ring 1	FKM AED	1
14	Gland O-Ring	FKM AED	1
15	Body to bonnet O-Ring	FKM AED	1
16	Gland	ASTM A216 WCB	1
17	Stem bearing	PEEK	1
18	Body Stud	ASTM A320 L7M	24
19	Body Nut	ASTM A194 7M	24
20	Bonnet Stud	ASTM A320 L7M	12
21	Bonnet Nut	ASTM A194 L7M	12
22	Hex Head Bolt	ASTM A194 L7M	2
23	Bonnet	ASTM A216 WCB	1
24	Anti-Static Spring	SS 316	1
25	VCI 2PC body drain valve model A260	A351 CF8M	3

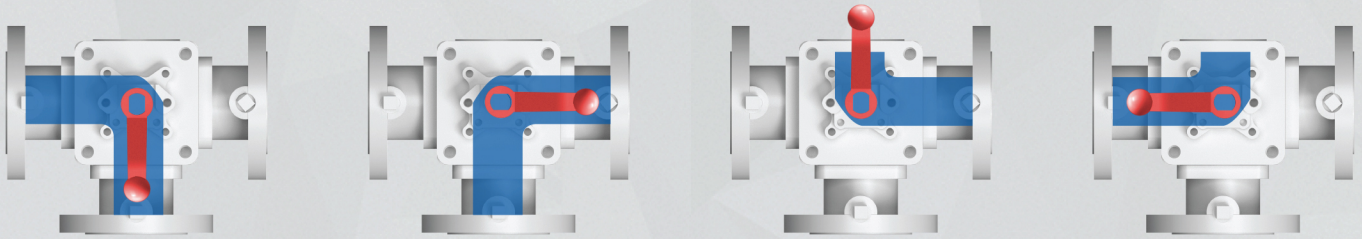




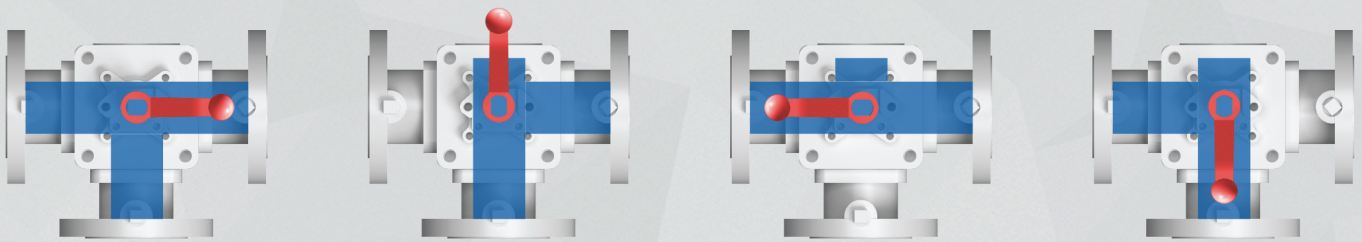
ANSI Class	Size	ØA	ØG	L	P	Ød	E	Bleed Port Size (NPT)
150	2"	2 3/4	7/8	11 1/4	21/32	1 31/32	1 11/16	3/4"
	3"	4 1/32	1 11/64	12 27/32	7/8	3 1/32	2 3/8	3/4"
	4"	4 59/64	1 11/32	16 11/32	29/32	3 15/16	3 7/32	1/2"
	6"	4 59/64	1 49/64	17 9/16	1 3/8	5 29/32	3 1/4	1/2"
300	2"	2 3/4	7/8	11 3/4	21/32	1 31/32	1 11/16	1/2"
	3"	4 1/32	1 11/64	12 27/32	7/8	3 5/32	2 3/8	1/2"
	4"	4 59/64	1 11/32	16 11/32	29/32	3 15/16	3 1/32	1/2"
	6"	4 59/64	1 49/64	18 27/64	1 3/8	5 29/32	3 1/32	1/2"
600	2"	2 3/4	1 3/64	14 1/2	7/8	1 31/32	3 13/32	1/2"
	3"	4 1/32	1 11/32	15 7/32	29/32	3 5/32	3 13/16	1/2"
	4"	4 59/64	1 25/32	17 3/8	1 3/8	3 15/16	4	1/2"
	6"	4 59/64	2 23/64	22 43/64	1 49/64	5 29/32	4	1/2"

- Note:**
- "L" dimension can be adjusted according to client's requirements.
 - Additional valve sizes and ANSI classes are available upon request.
 - All dimensions shown are in inches and are subject to change without notice.

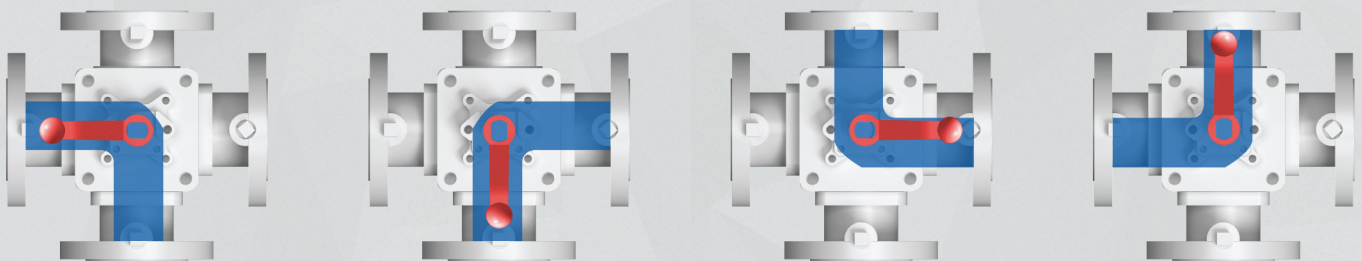
3-Way L-Port



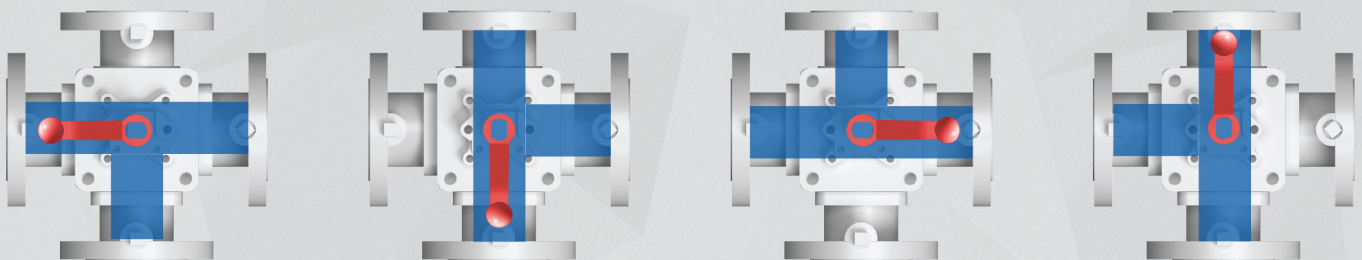
3-Way T-Port



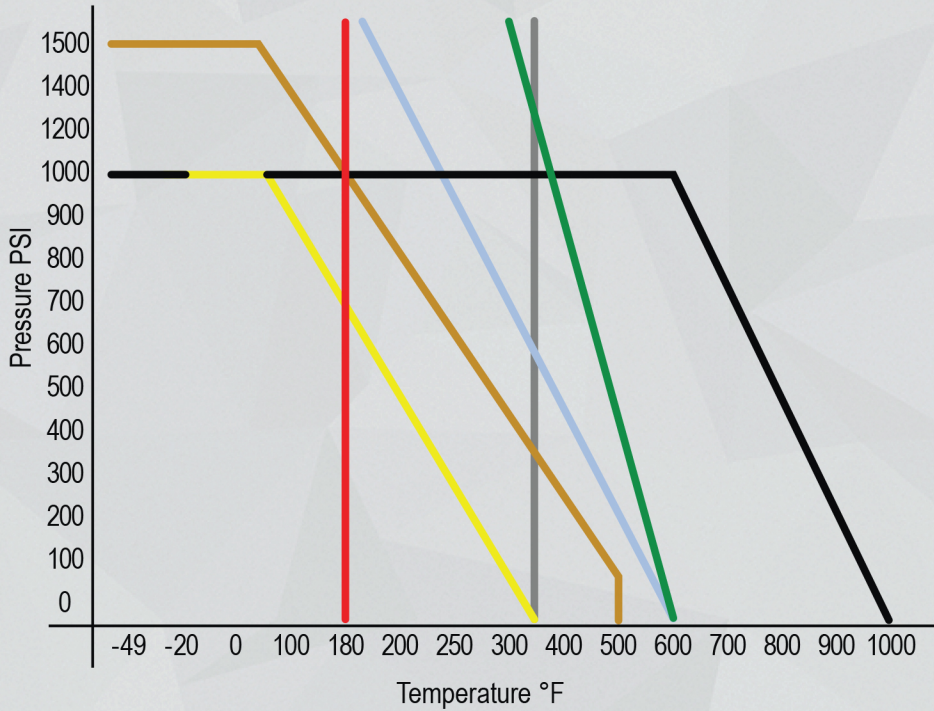
4-Way L-Port



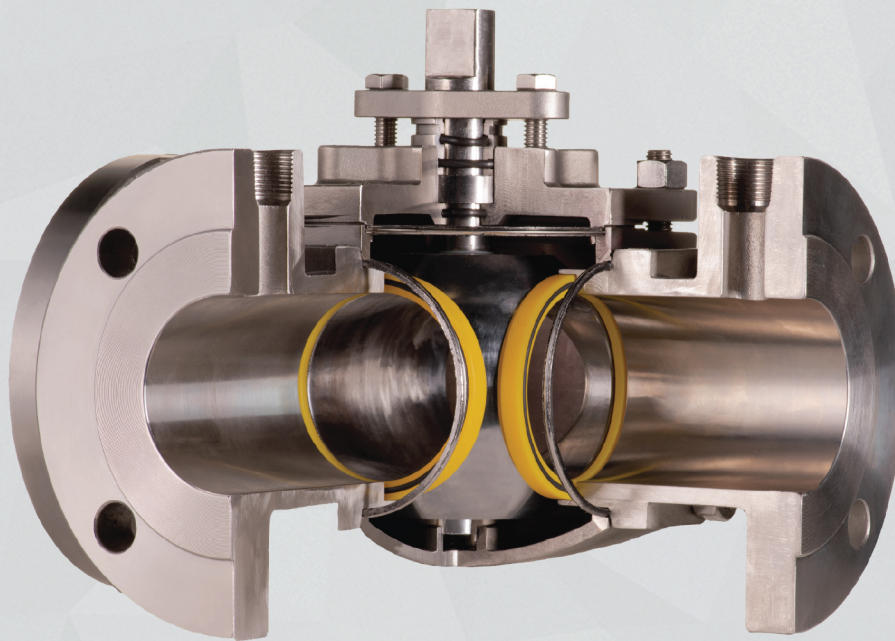
4-Way T-Port



Additional flow patterns available.



- Delrin
- Devlon
- Metal / Stellite
- PEEK with 20% Teflon
- PEEK with Glass and Graphite
- Poly-Carbon
- Virgin Teflon (PTFE)



Guide Valve Limited

51 Terecar Dr., Unit 1
 Woodbridge, ON CANADA L4L 0B5
 Tel: 905-761-7877
 Fax: 905-761-7917

www.gvs-vci.com

Guide Valve USA Limited

16295 North Frwy
 Houston, Texas, 77090.
 USA.

Toll-Free: 1-888-824-5693

sales@gvs-vci.com

Distributor / Agent: